

HOTCHKIS HOTCHKIS SPORT SUSPENSION



HORSEPOWER FOR YOUR SUSPENSION



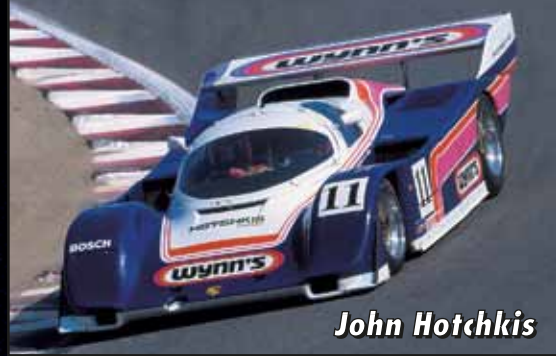
Volume 12



ALL ABOUT

HOTCHKIS HOTCHKIS SPORT SUSPENSION

The experience of John Hotchkis and the entire Hotchkis Performance team ensures that you receive high quality products, engineered to perform and designed to be strong. Our suspension controls many of the fastest cars in the country, from 8 second quarter mile Grand Nationals, Mustangs and Chevelles to canyon carving, street cruising Camaros, Monte Carlos, Impala SS's and Corvettes. Numerous road racing, drag racing and autocross racing teams rely and win with Hotchkis Performance products. When the best magazines choose suspension products, Hotchkis Performance is there. Just ask the editors of Hot Rod, Motor Trend, Car Craft, Chevy High Performance, Sport Truck, Super Chevy, Popular Hot Rodding, Street Trucks and Truckin'.



John Hotchkis

Dear Fellow Car Enthusiast,

Thank you for your support and continued loyalty. It is hard to believe that it has been almost 14 years since Hotchkis Performance products were first introduced to the aftermarket. We have grown tremendously since then because we have continued to pursue our original design goal to produce the highest quality suspension components that will dramatically improve the handling, stability, and traction of Muscle Cars, SUV's and trucks. Our newest innovation is our **TVS (Total Vehicle System)** kits that contain engineered and tuned components that work together to improve your Performance Vehicle's handling. All of these kits have passed our rigorous in-house testing procedures including slalom, skid pad, autocross and of course 1/4 mile. We are proud to say that the majority of our staff's personal vehicles are equipped with Hotchkis Performance products and these are the people you will talk to on the phone for answers to your technical questions. You can be confident that as Hotchkis Performance grows and expands that we will continue to produce the best suspension products available. We welcome your input and comments through e-mail or by phone.

See you on the road!

John Hotchkis



HOTCHKIS TOTAL VEHICLE SYSTEM (TVS)

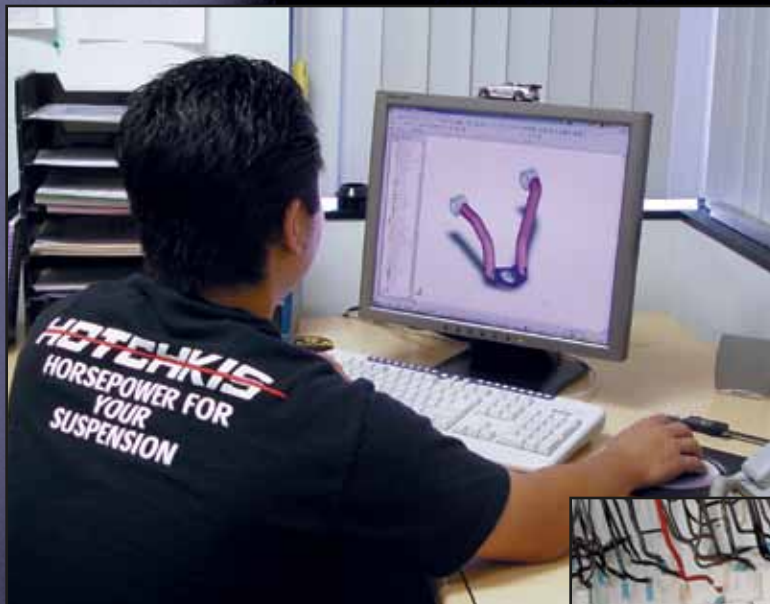


The Hotchkis TVS (Total Vehicle System) concept was designed for the driving enthusiast who demands the ultimate in vehicle handling and performance without sacrificing a comfortable ride. Using our TVS system guarantees that all the suspension components for your vehicle have been thoroughly engineered and designed to work together as a complete suspension system. This completely tuned suspension package eliminates the poor ride quality that often results from the use of components produced by different manufacturers.

THE HOTCHKIS PERFORMANCE ADVANTAGE:

The obvious Hotchkis Performance advantage is improved traction and handling for your performance vehicle. We go a step further giving you the additional advantage of convenience and product longevity with the inclusion of all necessary heavy duty installation hardware. This ensures our products live up to what performance magazine articles have described about Hotchkis Performance suspension: "Install on Saturday, drive on Saturday!"

SWAY BAR PROTOTYPE & PRODUCTION PROCESS



All Hotchkis Performance sway bars are meticulously designed on a fully parametric CAD system. This insures that the sway bars are designed for the proper fit and handling characteristics of the vehicle. Hotchkis Performance uses hollow sway bar technology extensively in their products. In most cases, this gives us the torsional stiffness the chassis tuner demands, but with about half the weight of a solid bar.

Once a sway bar has been prototyped on our CNC bender using the vector coordinates, it is then checked on a laser inspection system to ensure that the design tolerances have been met. Production parts are also checked using this same system, giving instant corrections to allow for spring back and material properties, giving the customer a superior quality part.



By manufacturing the sway bars on a CNC machine, we have eliminated many hand forming steps. This new manufacturing process allows all sway bars to be bent cold, ensuring the highest strength and durability that our customers demand. The CNC bender also allows us to make many of today's modern performance car's intricate shapes.

C-10 SPORT PACKAGE

1963-72 2WD



#80390

Dramatically improved handling, control with great ride quality.

For the ultimate handling 63-72 C-10 Pickup, nothing beats the Hotchkis Sport Suspension Total Vehicle System. Every aspect of the C-10 suspension has been re-engineered for the maximum performance and is being offered in a complete tuned package. Our system includes upper and lower geometry corrected a-arms, redesigned center link, front and rear sway bars, lowered sport coil springs, rear track bar, truck arm anti-squat brackets, and custom tuned Hotchkis/Bilstein shocks with relocation brackets. Our system is a proven autocross winner designed for maximum performance in a installer friendly kit. PROUDLY MADE IN THE USA.

FEATURES:

- Geometry Corrected Tubular Upper A-Arms
- Tubular Lower A-Arms Engineered to extend wheelbase 1.8" and add up to +9° Caster
- 4130 CNC Machined Cross Shaft / w Bronze Bushing & Delrin Bushings
- Includes fabricated center link and heavy duty tie rod sleeves to eliminate bump steer.
- 1 7/16" Front Sway Bar
- 4" Lowered Front, and 6" Lowered Rear Springs
- Front and Rear Hotchkis Tuned/Bilstein Shocks with relocater brackets for maximum efficiency.
- Rear Adjustable Track Bar
- Rear Anti-Squat Bracket System
- Unique 3/4" Blade Style Rear Sway Bar System



See www.hotchkis.net for individual part numbers.

1964-1988 GM A-BODY



Stage 2 Total Vehicle System



The Hotchkis Stage 2 Total Vehicle System is the ultimate tuned package for improved handling, drivability, and control of your GM A-Body car. The system starts with geometry corrected tubular A-Arms. These TIG welded arms feature improved suspension geometry which increases front end traction and grip. 1" Lowered sport springs and matched shocks improve the ride and control of the car reducing bottoming and excessive suspension movement. A massive 1 3/8" front sway bar and an adjustable 1 5/16" rear bar reduce body roll and sway improving car control. In the rear traction and grip is improved with adjustable upper trailing arms, heavy duty, boxed lower trailing arms, unique frame stiffeners and grade 8 hardware. The entire system is a bolt on installation and requires no modifications to the vehicle. Hotchkis offers three different levels of Total Vehicle Systems as well as individual components to fit any build configuration or budget.



Before



After

1964-1988 GM A-BODY

TUBULAR UPPER A-ARMS

Install the Hotchkis Sport Suspension Geometry Corrected Tubular Upper A-Arms and gain vastly increased handling and control. These TIG welded bolt-on A-Arms offer premium quality construction for ultimate performance and a great look. Smooth operating polyurethane bushings in the 4130 billet cross shaft allow the A-Arms to move through their travel easily. Finished in gloss black powder coat, the arms are ready to install and are complete with premium ball joints and polyurethane droop stops. Easy installation with no vehicle modifications required.



#1102



#1104

TUBULAR LOWER A-ARMS

Install the Geometry Corrected Hotchkis Tubular Lower A-Arms on your GM A-Body and gain vastly increased handling and control. These TIG welded, bolt-on A-Arms offer ride height adjustment for ultimate performance and a great look. Smooth operating Delrin bushings allow the A-Arms to move through their travel easily. Finished in gloss black powder coat, the arms are ready to install and are complete with ball joints, bump stops, ride height shims, polyurethane coil spring locators and Delrin bushings.

SPORT SWAY BARS

Improve cornering and straight line performance with a Hotchkis sway bar package. A massive 1 3/8" front sway bar comes complete with greasable bushings, brackets and hardware. We offer two different rear bars, one in 1" solid, or an adjustable tubular 1 5/16" rear bar in the extreme kits.



#2281, 1978-1988

#2282, 1964-1972



SPORT COIL SPRINGS

Improve handling and appearance with a set of Hotchkis Sport Coil Springs. With 1" and 2" drop combinations, these springs will give your car the right look, with an aggressive stance and a lower center of gravity. Our springs provide a firm but not harsh ride.

1964-1988 GM A-BODY

REAR SUSPENSION PACKAGES

Hotchkis Sport Suspension upper and lower trailing arms work together to positively locate and control the rear axle. Launches are quicker, smoother and more consistent by reducing wheel hop. The upper control arms allow for easy pinion angle changes to better tune your vehicle. Cornering and overall stability are dramatically improved through increased roll stiffness and sway bar effectiveness. The fabricated trailing arms are constructed from one piece of .120" wall TIG welded steel tubing making them the stongest in the industry and include greasable polyurethane bushings. Trailing arm mount braces and hardware are also included. This item is a must for any high horsepower A-Body models



STEERING REBUILD KITS

Worn out steering parts cause poor performance and put your safety at risk. Don't trust your old suspension parts, upgrade your Muscle Cars suspension with one of our PREMIUM STEERING REBUILD KITS. We have sourced only the highest quality components, and placed them in a convenient kit. Kit Includes: (2) Inner Tie Rod Ends, (2) Outer Tie Rod Ends, Center Link Assembly, Idler Arm.

Note: Does not include Tie Rod Sleeve.



MACHINED TIE ROD SLEEVES

Enhance steering precision with our Machined Tie Rod Adjusting Sleeves. They feature machined hex bodies, jam nuts and are finished in durable gloss black powder coat.



HPS 1000 Shocks

Improve the ride and handling of your muscle car with Hotchkis Sport Suspension's HPS 1000 vehicle specifically tuned shock absorbers. Manufacturing features Bilsteins deflective disc valve technology in a high pressure mono tube shock body which allows excessive heat to be dissipated quicker than twin tube designs. Conveniently bundled in a 4-pack, shocks can be used on stock or lowered cars.



REAR SPRING AIR BAGS

Improve launches and weight capacity by inserting these air bags inside your rear springs. Air bags work much better than air shocks offering a better ride and by still allowing a performance shock to be used.

1964-1988 GM A-BODY



1964-1972 GM A-BODY

CHEVELLE, EL CAMINO, OLDS CUTLASS, BUICK SKYLARK, PONTIAC GTO, ETC.

PART#	DESCRIPTION
1102	UPPER TUBULAR A-ARM PACKAGE, FOR STOCK SPINDLE
1103C	UPPER TUBULAR A-ARM PACKAGE, BRAKE & SPINDLE UPGRADE ONLY
1104	LOWER TUBULAR A-ARM PACKAGE
1104-B	LOWER TUBULAR A-ARM PACKAGE B-BODY SPINDLE
1160	HEAT SHIELD
1202	UPPER TRAILING ARMS (68-72)
1202AA	DOUBLE ADJUSTABLE UPPER TRAILING ARMS (68-72)
1203	UPPER TRAILING ARMS (64-67)
1203AA	DOUBLE ADJUSTABLE UPPER TRAILING ARMS (64-67)
1302	LOWER TRAILING ARMS (64-72)
1402	TRAILING ARM MOUNT BRACES (68-72)
1403	TRAILING ARM MOUNT BRACES (64-67)
1601	TIE ROD SLEEVES (64-70)
1612	TIE ROD SLEEVES (71-72)
1702	TRAILING ARM HARDWARE
1803	REAR SUSP PACKAGE (68-72), INCLUDES 1202, 1302, 1402, 1702
1803A	ADJ REAR SUSP PACKAGE (68-72), INC. 1202AA, 1302, 1402, 1702
1804	REAR SUSP PACKAGE (64-67), INCLUDES 1203, 1302, 1403, 1702
1804A	ADJ REAR SUSP PACKAGE (64-67), INC. 1203AA, 1302, 1403, 1702
1900	SPRING SET FOR SMALL BLOCK (64-66), 1" DROP, SINGLE PIGTAIL
1900R	REAR SPRINGS (64-66), 1" DROP, SINGLE PIGTAIL
1901	SPRING SET FOR SMALL BLOCK (67-72), 1" DROP, DOUBLE PIGTAIL
1901F	FRONT SPRINGS FOR SMALL BLOCK, 1" DROP (64-72)
1901R	REAR SPRINGS (67-72), 1" DROP, DOUBLE PIGTAIL
1916	SPRING SET FOR BIG BLOCK (67-72), 1" DROP, DOUBLE PIGTAIL
1916F	FRONT SPRINGS FOR BIG BLOCK, 1" DROP (64-72)
1917	SPRING SET FOR BIG BLOCK (64-66), 1" DROP SINGLE PIGTAIL
19112	64-66 SMALL BLOCK 2" SPRING SET
19112F	64-66 SMALL BLOCK 2" FRONT SPRINGS
19112R	64-66 SMALL BLOCK 2" REAR SPRINGS
19113	64-66 BIG BLOCK 2" SPRING SET
19113F	64-66 BIG BLOCK 2" FRONT SPRINGS
19113R	64-66 BIG BLOCK 2" REAR SPRINGS
19114	67-72 SMALL BLOCK 2" SPRING SET
19114F	67-72 SMALL BLOCK 2" FRONT SPRINGS
19114R	67-72 SMALL BLOCK 2" REAR SPRINGS
19115	67-72 BIG BLOCK 2" SPRING SET
19115F	67-72 BIG BLOCK 2" FRONT SPRINGS
19115R	67-72 BIG BLOCK 2" REAR SPRINGS
2202	SWAY BAR SET, 1 3/8" FRONT BAR (H), 1" REAR BAR (S)
2202F	FRONT SWAY BAR 1 3/8" (H)
2202R	REAR SWAY BAR, 1" (S)
2282	XTREME SWAY BAR SET, 1 3/8" FRONT BAR (H), 1' 5/16" REAR BAR (H)
2282R	EXTREME SPORT REAR SWAY BAR, 1' 5/16" REAR BAR (H)
31750	REAR AIR BAG KIT
70010012	HPS 1000 FRONT SHOCK
71010009	HPS 1000 REAR SHOCK
79010002	HPS 1000 SHOCK 4 PACK
80001	TVS KIT 64-66 BIG BLOCK, INCLUDES 1601, 1804A, 1917, 2202
80002	TVS KIT 64-66 SMALL BLOCK, INCLUDES 1601, 1804A, 1901, 2202
80003	TVS KIT 67 BIG BLOCK, INCLUDES 1601, 1804A, 1916, 2202
80004	TVS KIT 67 SMALL BLOCK, INCLUDES 1601, 1804A, 1901, 2202
80005	TVS KIT 68-70 BIG BLOCK, INCLUDES 1601, 1803A, 1916, 2202
80006	TVS KIT 68-70 SMALL BLOCK, INCLUDES 1601, 1803A, 1901, 2202
80007	TVS KIT 71-72 BIG BLOCK, INCLUDES 1612, 1803A, 1916, 2202
80008	TVS KIT 71-72 SMALL BLOCK, INCLUDES 1612, 1803A, 1901, 2202
89001	TVS KIT 64-66 BIG BLOCK, INCLUDES 1601, 1804A, 1917, 2282
89002	TVS KIT 64-66 SMALL BLOCK, INCLUDES 1601, 1804A, 1901, 2282
89003	TVS KIT 67 BIG BLOCK, INCLUDES 1601, 1804A, 1916, 2282
89004	TVS KIT 67 SMALL BLOCK, INCLUDES 1601, 1804A, 1901, 2282
89005	TVS KIT 68-70 BIG BLOCK, INCLUDES 1601, 1803A, 1916, 2282
89006	TVS KIT 68-70 SMALL BLOCK, INCLUDES 1601, 1803A, 1901, 2282
89007	TVS KIT 71-72 BIG BLOCK, INCLUDES 1612, 1803A, 1916, 2282
89008	TVS KIT 71-72 SMALL BLOCK, INCLUDES 1612, 1803A, 1901, 2282
89001-2	STAGE 2 TVS KIT 64-66 BIG BLOCK, INCLUDES 1601, 1804A, 1917, 2282, 1102, 1104, 79010002
89002-2	STAGE 2 TVS KIT 64-66 SMALL BLOCK, INCLUDES 1601, 1804A, 1901, 2282, 1102, 1104, 79010002
89003-2	STAGE 2 TVS KIT 67 BIG BLOCK, INCLUDES 1601, 1804A, 1916, 2282, 1102, 1104, 79010002
89004-2	STAGE 2 TVS KIT 67 SMALL BLOCK, INCLUDES 1601, 1804A, 1901, 2282, 1102, 1104, 79010002
89005-2	STAGE 2 TVS KIT 68-70 BIG BLOCK, INCLUDES 1601, 1803A, 1916, 2282, 1102, 1104, 79010002
89006-2	STAGE 2 TVS KIT 68-70 SMALL BLOCK, INCLUDES 1601, 1803A, 1901, 2282, 1102, 1104, 79010002
89007-2	STAGE 2 TVS KIT 71-72 BIG BLOCK, INCLUDES 1612, 1803A, 1916, 2282, 1102, 1104, 79010002
89008-2	STAGE 2 TVS KIT 71-72 SMALL BLOCK, INCLUDES 1612, 1803A, 1901, 2282, 1102, 1104, 79010002
CHESTR002	STEERING REBUILD KIT, 64-66 w 13/16" Center Link
CHESTR003	STEERING REBUILD KIT, 64-67
CHESTR014	STEERING REBUILD KIT, 68-70
CHESTR024	STEERING REBUILD KIT, 71-72

1973 - 1977 GM A - BODY

CHEVELLE, ELCAMINO, MONTE CARLO, BUICK REGAL, ETC.

PART#	DESCRIPTION
1206	UPPER TRAILING ARMS
1206AA	DOUBLE ADJUSTABLE UPPER TRAILING ARMS
1306	LOWER TRAILING ARMS
1612	TIE ROD SLEEVES
1702	TRAILING ARM HARDWARE

1978-1988 GM A/G-BODY

GRAND NATIONAL, ELCAMINO, MONTE CARLO, BUICK REGAL, ETC.

PART#	DESCRIPTION
1101C	TUBULAR A-ARM PACKAGE, BRAKE & SPINDLE UPGRADE ONLY
1114U	UPPER TUBULAR A-ARM PACKAGE, FOR STOCK SPINDLE
1114L	LOWER TUBULAR A-ARM PACKAGE
1160	HEAT SHIELD
1201	UPPER TRAILING ARMS
1201AA	DOUBLE ADJ UPPER TRAILING ARMS
1301	LOWER TRAILING ARMS
1401	TRAILING ARM MOUNT BRACES
1601	TIE ROD SLEEVES
1701	TRAILING ARM HARDWARE
1802	REAR SUSPENSION PACKAGE, INCLUDES 1201, 1301, 1401, 1701
1802A	ADJ REAR SUSP PACKAGE, INCLUDES 1201AA, 1301, 1401, 1701
1902	SPRING SET, 1" DROP
1902F	FRONT SPRINGS, 1" DROP
1901R	REAR SPRINGS, 1" DROP
2201	SWAY BAR SET, 1 3/8" FRONT BAR (H), 1" REAR BAR (S)
2201F	FRONT SWAY BAR, 1 3/8" (H)
2201R	REAR SWAY BAR, 1" (S)
2281	EXTREME SPORT SWAY BAR, 1 1/4" REAR BAR (H) 1 3/8" FRONT BAR(H)
2281R	EXTREME SPORT REAR SWAY BAR, 1' 5/16" REAR BAR (H)
31750	REAR AIR BAG KIT
70010001	HPS SHOCK 1000 FRONT SHOCK
71010009	HPS SHOCK 1000 REAR SHOCK
79010001	HPS 1000 SHOCK 4 PACK
80009	TVS KIT
89009	EXTREME TVS KIT I
89009-2	STAGE 2 TVS KIT INCLUDES
CHESTR011	STEERING REBUILD KIT



1967-1969 GM F-BODY



Stage 2 Total Vehicle System #80015-2CV



The Hotchkis Stage 2 Total Vehicle System is the ultimate tuned package for improved handling, drivability, and control of your GM F-Body car. The system starts with geometry corrected tubular A-Arms. These TIG welded arms feature improved suspension geometry which increases front end traction and grip. Lowered sport springs, leafs and matched shocks improve the ride and control of the car reducing bottoming and excessive suspension movement. A massive 1 1/8" front sway bar and an adjustable 7/8" rear bar reduce body roll and sway improving car control. To improve chassis rigidity, sub frame connectors and a rear chassis Stage 2 sway bar brace are included. The entire system is a bolt on installation and requires no modifications to the vehicle except slight welding. Hotchkis offers two different levels of Total Vehicle Systems as well as individual components to fit any build configuration or budget.

SWIVEL MAX LEAF SPRING BUSHING UPGRADE



Upgrades existing leaf spring kits to a high articulation heim joint bushing for maximum performance at the track or street.

HANDLE BARS & SHOCK TOWER BRACE



FEATURES:

- Fabricated from 1.5" steel tubing and TIG welded to precision CNC bent brackets
- CAD designed for superior fit and finish. Laser cut gussets maximize strength
- Powdercoated anthracite finish
- Works with most suspension systems and engine installations
- Easy, bolt-on installation

BENEFITS:

- Rigidly connects the upper mounts, which dramatically reduces chassis flex during hard cornering and acceleration
- Triangulation brace ties a-arms, shock towers and firewall together
- Improves driver control, handling and overall feel. Perfect final addition for any street machine, pro-touring car or road race Camaro



SWAY BAR & CHASSIS MAX BRACE

- Strong, Lightweight Tubular 1 1/8" Front Bar
- Strong, Lightweight Tubular 7/8" 3 Hole Adj. Rear Bar
- Includes Chassis Max Rear Reinforcement Brace
- Greasable Sway Bar Bushings and Mounts
- Fabricated Dog-Bone End Links, with Grease Fittings.
- High Quality, Grade 8 Hardware Included.
- Durable, Gloss Black Powder Coated Finish.



1967 - 1969 GM F - BODY CAMARO, PONTIAC FIREBIRD

PART#	DESCRIPTION
1107	UPPER TUBULAR A-ARM PACKAGE, FOR STOCK SPINDLE
1109	LOWER TUBULAR A-ARM PACKAGE
1404	CENTER X-BRACE KIT (FOR CONVERTIBLES ONLY)
1415	CHASSIS STAGE 2 SWAY BAR BRACE
1607	TIE ROD SLEEVES
2015	FENDER BRACE
2314	LOWERING PAD KIT (6) 1/4" THICK - 1" DROP BOTH SIDES MAX
4007	SUB FRAME CONNECTORS, FOR COUPE ONLY
4008	SUB FRAME CONNECTORS, FOR CONVERTIBLES ONLY
81001	CHASSIS STAGE 2 KIT CONVERTIBLE ONLY 4008 & 1404
20101	CHASSIS STAGE 2 HANDLE BARS
20102	SHOCK BRACE 68-69 ONLY
70010012	HPS 1000 FRONT SHOCK
71010012	HPS 1000 REAR SHOCK
79010003	HPS 1000 SHOCK 4 PACK
1906F	FRONT SPRINGS FOR BIG BLOCK, 2" DROP
1907F	FRONT SPRINGS FOR SMALL BLOCK, 2" DROP
1937F	FRONT SPRINGS FOR SMALL BLOCK, 3" DROP
2407C	LEAF SPRINGS KIT, 1 1/2" DROP, INC. SHACKLES AND HARDWARE
2413C	LEAF SPRINGS KIT, 3" DROP, INC. SHACKLES AND HARDWARE
21016	SWIVEL STAGE 2 HIGH ARTICULATION BUSHING UPGRADE
2207C	SWAY BAR SET, 1 1/8" FRONT BAR (H), 7/8" REAR BAR (H) W/BRACE
2207F	FRONT SWAY BAR, 1 1/8" (H)
2207RC	REAR SWAY BAR, 7/8" (H) W/ BRACE
80014	TVS KIT BIG BLOCK
80015	TVS KIT SMALL BLOCK
80035	TVS KIT SMALL BLOCK 3" DROP
80014-2	STAGE 2 TVS KIT BIG BLOCK
80015-2	STAGE 2 TVS KIT SMALL BLOCK
80035-2	STAGE 2 TVS KIT SMALL BLOCK 3" DROP
80014-2CV	STAGE 2 TVS KIT BIG BLOCK 2" DROP 67-69 CONVERTIBLE
80015-2CV	STAGE 2 TVS KIT SMALL BLOCK 2" DROP 67-69 CONVERTIBLE
80035-2CV	STAGE 2 TVS KIT SMALL BLOCK 3" DROP 67-69 CONVERTIBLE
CHESTR063	STEERING REBUILD KIT, 67 MANUAL STEERING
CHESTR065	STEERING REBUILD KIT, 67 POWER STEERING
CHESTR040	STEERING REBUILD KIT, 68-69 MANUAL STEERING
CHESTR041	STEERING REBUILD KIT, 68-69 POWER STEERING

COMPLETE SUB-FRAME

Replace your rusty and twisted sub-frame on your 1967-69 Camaro, 1967-69 Firebird, or 1968-74 Nova with a brand new unit from Hotchkis. Our High Quality sub-frame is manufactured by AMD and features factory-style construction for OEM appearance, and added bracing to the lower cross member, for additional strength. Hotchkis strips and media blasts the entire frame and adds a semi gloss powder coat finish. Hotchkis then takes this beautiful sub-frame and pre installs all the key suspension components making this a truly bolt-on package.

1970-1981 GM F-BODY



Stage 2 Total Vehicle System #80016-2



The Hotchkis Stage 2 Total Vehicle System is the ultimate tuned package for improved handling, drivability, and control of your GM F-Body car. The system starts with geometry corrected tubular A-Arms. These TIG welded arms feature improved suspension geometry which increases front end traction and grip. Lowered sport springs, leafs and matched shocks improve the ride and control of the car reducing bottoming and excessive suspension movement. A massive 1 3/8" front sway bar and an adjustable 7/8" rear bar reduce body roll and sway improving car control. To improve chassis rigidity, sub frame connectors are included. The entire system is a bolt on installation and requires no modifications to the vehicle except slight welding. Hotchkis offers two different levels of Total Vehicle Systems as well as individual components to fit any build configuration or budget.

SWIVEL STAGE 2 LEAF SPRING BUSHING UPGRADE



Upgrades existing leaf spring kits to a high articulation heim joint bushing for maximum performance at the track or street.

1970-81 CAMARO/FIREBIRD TUBULAR A-ARMS



UPPER A-ARM FEATURES:

- Smooth operating greasable Delrin bushings
- Lightweight, strong 1.25" tubing
- CNC machined 4130 Chrome Moly crossshaft
- Bolt-on installation

LOWER A-ARM FEATURES:

- 100% TIG welded 1.5" tubular steel construction
- CNC machined inset spring cup

1970-81 CAMARO HANDLE BARS



- Precision aluminum ride height adjustment shims
- Polyurethane coil springs isolators
- Easy to lubricate Delrin bushings
- Lower ball joint installed
- Includes our unique rod end hybrid end links

BENEFITS:

- Rigidly connects upper a-arms to the cowl and firewall, which dramatically reduces chassis flex during hard cornering and acceleration

FEATURES:

- Fabricated from 1.5" steel tubing and TIG welded to precision CNC bent brackets
- CAD designed for superior fit and finish
- Powdercoated anthracite finish
- Works with most suspension systems and engine installations
- Easy, bolt-on installation

1970-81 CAMARO/FIREBIRD SUB FRAME CONNECTORS



FEATURES:

- TIG welded, fabricated 1.5"x3" .120 wall rectangular steel
- Rigidly connects the front sub-frame to chassis, dramatically reducing chassis flex during hard cornering and acceleration
- No cutting or modifying floor
- Bolt-on front connection. Allows for sub-frame removal
- Unique tucked-in design gives excellent ground clearance

1970 - 1981 GM F - BODY CAMARO, 1970 - 1973 PONTIAC FIREBIRD

PART#	DESCRIPTION
1106	STOCK UPPER TUBULAR A-ARM PACKAGE, FOR STOCK SPINDLE
1108	LOWER TUBULAR A-ARM PACKAGE
1612	TIE ROD SLEEVES
4012	SUB FRAME CONNECTORS, 1970-1973
4013	SUB FRAME CONNECTORS, 1974-1981
20103	CHASSIS STAGE 2 HANDLE BARS CAMARO ONLY
70010009	HPS 1000 FRONT SHOCK, 77-81
70010012	HPS 1000 FRONT SHOCK, 70-76
71010014	HPS 1000 REAR SHOCK
79010004	HPS 1000 SHOCK 4 PACK (1970-1976)
79010005	HPS 1000 SHOCK 4 PACK (1977-1981)
1908F	FRONT SPRINGS FOR SMALL BLOCK, 2" DROP
1909F	FRONT SPRINGS FOR BIG BLOCK, 2" DROP
2408C	LEAF SPRINGS KIT, 1 1/2" DROP, INC. SHACKLES AND HARDWARE
21016	SWIVEL STAGE 2 HIGH ARTICULATION BUSHING UPGRADE
2236	SWAY BAR SET, 1 3/8" FRONT BAR (H) & 7/8" REAR BAR (H)
2236F	FRONT SWAY BAR, 1 3/8" (H)
2236R	REAR SWAY BAR, 7/8" (H)
80016	TVS KIT BIG BLOCK
80017	TVS KIT SMALL BLOCK
80016-2	STAGE 2 TVS KIT BIG BLOCK 70-73 Camaro/Firebird
80017-2	STAGE 2 TVS KIT SMALL BLOCK 70-73 Camaro/Firebird
80016-24	STAGE 2 TVS KIT BIG BLOCK 74-76 Camaro
80017-24	STAGE 2 TVS KIT SMALL BLOCK 74-76 Camaro
80016-27	STAGE 2 TVS KIT BIG BLOCK 77-81 Camaro
80017-27	STAGE 2 TVS KIT SMALL BLOCK 77-81 Camaro

1974 - 1981 PONTIAC FIREBIRD

PART#	DESCRIPTION
1106	STOCK UPPER TUBULAR A-ARM PACKAGE, FOR STOCK SPINDLE
1108	LOWER TUBULAR A-ARM PACKAGE
1612	TIE ROD SLEEVES
4013	SUB FRAME CONNECTORS, 1974-1981
70010009	HPS 1000 FRONT SHOCK, 77-81
70010012	HPS 1000 FRONT SHOCK, 70-76
71010014	HPS 1000 REAR SHOCK
79010004	HPS 1000 SHOCK 4 PACK (1970-1976)
79010005	HPS 1000 SHOCK 4 PACK (1977-1981)
1908F	FRONT SPRINGS FOR SMALL BLOCK, 2" DROP
1909F	FRONT SPRINGS FOR BIG BLOCK, 2" DROP
2409C	PONTIAC LEAF SPRINGS KIT, 1 1/2" DROP, INC. SHACKLES AND HARDWARE
21016	SWIVEL STAGE 2 HIGH ARTICULATION BUSHING UPGRADE
2236F	FRONT SWAY BAR, 1 3/8" (H)
2236R	REAR SWAY BAR, 7/8" (H)
2236	SWAY BAR SET, 1 3/8" FRONT BAR (H) & 7/8" REAR BAR (H)
80033	TVS KIT BIG BLOCK INCLUDES 1612, 1909F, 2236, 2409C
80034	TVS KIT SMALL BLOCK INCLUDES 1612, 1908F, 2236, 2409C
80033-2	STAGE 2 TVS KIT 74-76 Firebird BB
80034-2	STAGE 2 TVS KIT 74-76 Firebird SB
80033-27	STAGE 2 TVS KIT 77-81 Firebird BB
80034-27	STAGE 2 TVS KIT 77-81 Firebird SB

1968-1974 GM X-BODY NOVA



CHEVROLET TRI 5 (55, 56, 57) SWAY BARS

Dramatically improve the cornering performance and traction of your 1955-57 Chevy with the Hotchkis Sport Suspension Sway Bar Package. Our performance sway bar package offers fine tunable rear roll stiffness previously unavailable for the classic Chevy Tri-Fives. Cars with wider rear tires and high horsepower engines will greatly benefit from this stability package. The kit includes TIG welded end-links with easy to lubricate polyurethane bushings, premium mounting hardware including, stainless steel u-bolts, laser cut axle mounts, polyurethane bushings, grade 8 bolts and gloss black powder coat finish.

FEATURES:

- Front sway bar-lightweight, durable 1.3/8" tubular steel 60% stiffer than stock sway bar ~ (300 lbs./in)
- Rear sway bar-lightweight, durable 1.0" tubular steel Two adjustment options: 309 lbs./in and 489 lbs./in (No stock rear sway bar)
- End-links feature precision TIG welded construction with easy to lubricate polyurethane bushings.
- Premium mounting hardware including, stainless steel u-bolts, laser cut axle mounts, polyurethane bushings and grade 8 bolts.
- Gloss black powder coat finish.

BENEFITS:

- Brings handling excitement to the classic Tri-Five Chevy
- Increases stability, improves traction, reduces body roll by increasing front/rear roll stiffness
- Two adjustment options on rear sway bar allow optimized handling balance to compensate for larger rear tires and front/rear weight bias
- Easy bolt-on installation in front with minor frame drilling required in rear

IMPALA SS • CAPRICE • IMPALA SS



**Double A
Upper Arms**



- Lowers Impala 1 1/4"
- Includes Bump Stops & Isolators

SPORT COIL SPRINGS

Lower your Impala SS/Caprice from stock and improve handling with our coil springs. They provide an aggressive stance with a firm, but not harsh ride. Each dark blue powdercoated spring is precision wound using the highest quality steel.

THE PRODUCTS OF CHOICE FOR MANY IMPALA SS CLUB MEMBERS.

90-96 GM B-Body	
PART#	DESCRIPTION
1205	UPPER TRAILING ARMS
1305	LOWER TRAILING ARM
1612	TIE ROD SLEEVES
1709	TRAILING ARM HARDWARE KIT FOR THE 1305
1715	TRAILING ARM HARDWARE KIT FOR THE 1205
1811	X-TEND REAR SUSP PACKAGE 90-96 ONLY, WHEEL CENTER KIT
1812	REAR SUSPENSION PACKAGE, INCLUDES 1205 & 1305
1922	SPRING SET 90-96 1.5" FRONT & 1.25" REAR DROP (IMPALA SS 1.25" F & 1" R)
2205	SWAY BAR SET, 1 7/16" FRONT BAR (H) & 1 3/8" REAR BAR (H)
2206	SWAY BAR SET, 1 7/16" FRONT BAR (H) & 1 3/8" REAR BAR (H), WAGON ONLY

- Improves Traction and Stability
- Centers Rear Wheels



#1811 X-Tend Kit

X-TEND™ REAR SUSPENSION SYSTEM

Our X-Tend Trailing Arms center the rear wheel in the fender wells giving your Impala the right look. Cornering and overall stability are dramatically improved. The Trailing Arms are constructed from .120" wall steel tubing and are fitted with special polyurethane bushings. These easy to install products are finished in brilliant black powder coating.

- Improves Handling
- Reduces Roll



NEW! HOLLOW REAR SWAY BAR

IMPALA SS, CAPRICE SWAY BARS

The combination of the 7/16" hollow front and 1 3/8" hollow rear bars, control the roll in the corners and plant the car on the straights. A '96 Impala SS equipped with our sway bars covered the 600 ft. slalom test 7.8 MPH faster than stock. Ride comfort is not compromised. Finished in gloss black powdercoat and complete with polyurethane bushings, heavy duty brackets and endlinks.

BEL AIR • BISCAYNE • CAPRICE • IMPALA

**TUBULAR
CONTROL ARMS
NOW AVAILABLE**



*Improves Handling and Control
Increases Stability*



Multi-Adjustable

**New Sway
Bar #2269
Fits 605 Box**

PERFORMANCE SUSPENSION SYSTEM

Turn your giant, unruly Chevrolet B-Body car into a present day handling machine with our performance suspension system. This system includes our fabricated Lower Trailing Arms, adjustable Upper Trailing Arms, adjustable Panhard Rod, tuned Sway Bar package, power steering and sway bar brackets, endlinks, stainless u-bolts and complete installation hardware. The products are 100% TIG welded for greater strength and finished in great looking, durable gloss black powdercoat. Complete installation instructions are included.

**Proudly
made in the U.S.A.**

PERFORMANCE SWAY BAR PACKAGE

Eliminate unwanted body roll and old car handling with our Performance Sway Bar Package. This easy to install package dramatically improves handling, stability and control without compromising ride quality. Our 1 1/4" front Sway Bar and adjustable 1" rear Sway Bar, control unwanted body roll when cornering and stabilize your car when cruising. These hollow Sway Bars are finished in gloss black powdercoat and come complete with fabricated end links, stainless steel u-bolts, heavy duty brackets, grade 8 hardware and easy to lubricate polyurethane bushings.



*Improves Stability and
Axle Control*

REAR SUSPENSION SYSTEM

Launch harder, accelerate smoothly and gain axle control with our Performance Rear Suspension System. New engine and tire technology vastly overpowers stock suspension. Our fabricated Lower Trailing Arms, adjustable Upper Trailing Arms and adjustable Panhard Rod positively locate the axle under your car, allowing you to benefit from new engine, transmission and tire technology. Optimum pinion angle adjustment for superior traction and proper u-joint angle to cure unwanted driveline vibration can be achieved with our adjustable Upper Trailing Arms. For increased stability and larger tire packaging, the axle can be centered under your car with our adjustable Panhard Rod.

Our performance suspension is finished in gloss black powdercoat and features tough, quiet riding, greasable polyurethane bushings, CNC machining and 100% Tig welded construction. Grade 8 hardware and complete instructions are included.

1959-64 CHEVROLET B-BODY

Part#	Description	Part#	Description
1213	Adjustable Upper Trailing Arm Single Arm	1813	Rear Suspension Package Dual Upper Arms (1213 x 2, 1313, 1513)
1313	Lower Trailing Arms	1820	Rear Suspension Package Single Upper Arm (1213, 1313, 1513)
1513	Adjustable Panhard Rod	2268	Sway Bar Package F = 1 1/4" Hollow R = 1" Hollow
		2269	Sway Bar Package for 605 Steering Box

* 1213 Upper Trailing Arm sold separately. Order two for dual upper trailing arm applications.

BEL AIR • BISCAYNE • CAPRICE • IMPALA



Proudly made in the **U.S.A.**

Multi-Adjustable

PERFORMANCE SUSPENSION SYSTEM

Turn your giant, unruly Chevrolet B-Body car into a present day handling machine with our performance suspension system. This system includes our fabricated Lower Trailing Arms, adjustable Upper Trailing Arms, adjustable Panhard Rod, tuned Sway Bar package, sway bar brackets, endlinks, stainless u-bolts and complete installation hardware. The products are 100% TIG welded for greater strength and finished in great looking, durable gloss black powdercoat. Complete installation instructions are included.

Improves Traction, Handling and Control



PERFORMANCE SWAY BAR PACKAGE

Eliminate unwanted body roll and old car handling with our Performance Sway Bar Package. This easy to install package dramatically improves handling, stability and control without compromising ride quality. Our 1 1/4" front Sway Bar and adjustable 1" rear Sway Bar, control unwanted body roll when cornering and stabilize your car when cruising. These hollow Sway Bars are finished in gloss black powdercoat and come complete with fabricated end links, stainless steel u-bolts, heavy duty brackets, grade 8 hardware and easy to lubricate polyurethane bushings.

REAR SUSPENSION SYSTEM

Launch harder, accelerate smoothly and gain axle control with our Performance Rear Suspension System. New engine and tire technology vastly overpowers stock suspension. Our fabricated Lower Trailing Arms, adjustable aluminum Upper Trailing Arms and adjustable Panhard Rod positively locate the axle under your car, allowing you to benefit from new engine, transmission and tire technology. Optimum pinion angle adjustment for superior traction and proper u-joint angle to cure unwanted driveline vibration can be achieved with our adjustable Upper Trailing Arms. For increased stability and larger tire packaging, the axle can be centered under your car with our adjustable Panhard Rod. Our performance suspension is finished in gloss black powdercoat and features tough, quiet riding, greasable polyurethane bushings, CNC machining and 100% Tig welded construction. Grade 8 hardware and complete instructions are included.

Improves Stability and Axle Control



1965-70 CHEVROLET B-BODY

Part#	Description	Part#	Description
1214	Adjustable Upper Trailing Arm 65-66 Single Alum. Bodied Arm	1819	Rear Suspension Package 65-66 Single Upper Arm
1215	Adjustable Upper Trailing Arm 67-70 Single Alum. Bodied Arm	1821	Rear Suspension Package 67-70 Single Upper Arm
1314	Lower Trailing Arms 65-70	1822	Rear Suspension Package 67-70 Dual Upper Arms
1514	Adjustable Panhard Rod 65-70	2253	Sway Bar Package 65-66 F = 1 1/4" Hollow R = 1" Hollow
1814	Rear Suspension Package 65-66 Dual Upper Arms	2273	Sway Bar Package 67-70 F = 1 1/4" Hollow R = 1" Hollow

* 1214 & 1215 Upper Trailing Arm sold separately. Order two for dual upper trailing arm applications.

(888) 751-8918 • WWW.HOTCHKIS.NET

2010 + CAMARO



#80117



2010-2011 CAMARO COUPE & CONVERTIBLE

PART#	DESCRIPTION
19110	SPRINGS FRONT AND REAR SS 1 INCH DROP F&R (COUPE)
19116	CONVERTIBLE DROP SPRINGS F&R 1 INCH DROP F&R (CONVERTIBLE)
20104	UNDER CAR CHASSIS BRACE
22109	SWAY BARS FRONT 1 1/4 (H) REAR 1' (H)
22110	FRONT & REAR SWAY BAR KIT W/ ENDLINKS
25109	ENDLINK KIT
38104	CHASSIS BRACE SPACER KIT
38109	STRUT SPACER FOR SUPER CHARGERS
22110F	FRONT SWAY BAR W/ ENDLINKS 1 1/4 210% 1 HOLE
22110R	REAR SWAY BAR COMP W/ENDLINKS 500,630,800% 3 HOLE
25109F	FRONT ENDLINK
25109R	REAR ENDLINK
80115-1	STAGE ONE KIT INCLUDES SWAYBARS AND SPRINGS (COUPE)
80116	TRACK PACK INCLUDES 19110,20104,22109 (COUPE)
80117	RACE PACK INCLUDES 22110,20104,20109,19110 (COUPE)
80119-1	STAGE ONE KIT INCLUDES SWAYBARS AND SPRINGS (CONVERTIBLE)
80119-2	TRACK PACK INCLUDES 19116,20104,22109 (CONVERTIBLE)
80119-3	RACE PACK INCLUDES 22110,20104,20109,19116 (CONVERTIBLE)

RACE PACK FEATURES:

- Lightweight 1.25" tubular front bar & 1.375" adjustable tubular rear bar
- High quality rod end links
- 1" Lowered sport coil springs with high performance rates, F.210lbs/in, R.440 lbs/in
- Chassis Max Strut Brace designed to clear Magnuson supercharger systems
- Chassis Max underbody brace, manufactured from Hotchkis exclusive extruded aluminum aero tubing

Designed for high performance 5th Gen Camaros headed for autocross and track days, the Hotchkis Sport Suspension Race Pack is a complete suspension solution that tunes and balances the handling of fifth gen Camaros. Born on the track and engineered for razor-sharp handling performance, our race pack improves steering response and stability, eliminates understeer, sub-frame movement and allows for precise driver control. Our system includes a 1.25" tubular front sway bar, a massive 1.375" 3 way adjustable rear sway bar, high quality 3 pc lined heim joint end links, 1" lowered sport springs, a strut tower brace, and the Chassis Max undercar brace, ties the rear sub frame to the uni-body, reducing wheel hop and sub-frame movement. All necessary hardware and complete installation instructions are included.





CAMARO/FIREBIRD SHOCK TOWER BRACES

Unwanted shock tower chassis flex effectively locate the shock towers. Our Shock Tower Braces enhance front end stability, dampen front end vibration and reduce body roll. They work well for drag racing and turning corners. Fabricated from 1 1/2" length TIG welded aluminum for strength, and finished in gloss red powdercoat. They are easy to install and come complete with hardware and instructions.

1982-1992 Camaro/Firebird

PART #	DESCRIPTION
1040G	Torque Arm Mount (84-92) Lips Facing Away From Driveshaft
1041G	Torque Arm Mount (82-83)
1043G	Torque Arm Mount (84-92) Lips Facing Toward Driveshaft
1301*	Lower Trailing Arms
1501*	Adjustable Panhard Rod
1601*	Tie Rod Sleeves
1801*	Rear Suspension Package
1903	Sport Coil Springs (1" Drop)
2203	Sport Sway Bar Set
2203R	Sport Sway Bar Rear only w/stock (36mm Front only)
4001	Sub Frame Connectors (Not for Convertibles)

1993-2002 Camaro/Firebird

1040G	Torque Arm Mount
1301*	Lower Trailing Arm
1501*	Adjustable Panhard Rod
1801*	Rear Suspension Package
1904	Sport Coil Springs for the LT1 (1" Drop)
1905	Sport Coil Springs for the V6, SS & LS1 (1" Drop)
2003*	Shock Tower Brace for LT1 Only
2006*	Shock Tower Brace for V6, SS & LS1
2204	Sport Sway Bar Set
4002	Sub Frame Connectors (Not for Convertibles)

*Products available in red or black. (R) after part number denotes red.

**Does not include Coil Springs and Sway Bars



HOTCHKIS
HOTCHKIS
SPORT SUSPENSION

ground tie and dash rattles. Fabricated from 1 1/2" X 2" steel tubing and finished in gloss black powdercoat. Easy weld in installation.

GM MODERN MUSCLE



1997 - 2011 CORVETTE SPORT SWAY BARS



#2284 (05-11)
#2285 (97-04)

FEATURES:

- Lightweight, durable tubular steel front sway bar
- Lightweight, durable adjustable tubular steel rear sway bar
- Factory style oil impregnated rubber bushings included
- Gloss black powder coat finish

1997-2004 GM C5 CORVETTE

YEAR	PART#	DESCRIPTION
97-04	2285	Sway Bar Set, 1.25" Front & 1" Adj. Rear
05-11	2284	Sway Bar Set, 1.25" Front & 1.125" Adj. Rear

2005-2007 PONTIAC GTO SPORT SWAY BARS



#2278

FEATURES:

- Lightweight, durable tubular steel front sway bar
- Lightweight, durable tubular steel rear sway bar
- Greasable polyurethane bushings
- Gloss black powder coat finish

MODEL	PART#	DESCRIPTION
GTO	2278	Sport Sway Bar Set, 33.5mm Front, 19mm Rear

2004-2006 CADILLAC CTS & CTS-V SPORT SWAY BARS



#2280

FEATURES:

- Lightweight, durable tubular steel front sway bar
- Lightweight, durable tubular steel rear sway bar
- Greasable polyurethane bushings
- Gloss black powder coat finish

MODEL	PART#	DESCRIPTION
CTS	2279	Sport Sway Bar Set, 30mm Front, 21mm Rear
CTS-V	2280	Sport Sway Bar Set, 31.75mm Front, 25.4mm Rear



SPORT SWAY BARS

Control roll and improve towing control of your Chevrolet, GMC, and Cadillac truck or sport utility vehicles with our Sport Sway Bar Package. They dramatically reduce sway and enhance safety without sacrificing ride comfort. Your truck or SUV will also be more stable when driving off road due to reduced body roll and increased stability. The larger diameter hollow front and rear sway bars are finished in gloss black powdercoat and come complete with fabricated links, bushings, brackets and hardware.

PART# DESCRIPTION

1999 - 05 GM FULLSIZE TRUCK

- 2228 SWAY BAR SET, 2WD, 1/2 TON, STK HT, 1 7/16" FRT & 1" RR
- 2229 SWAY BAR SET, 2WD, 1/2 TON, 4" DROP, 1 7/16" FRT & 1" RR
- 2230 SWAY BAR SET, 4WD, 1/2 TON, STK HT, 1 7/16" FRT & 1" RR

2000-2006 GM FULL SIZE SUV

TAHOE, SUBURBAN, YUKON, DENALI, ESCALADE, AVALACHE, ETC.

- 2240 SWAY BAR SET, 2WD/4WD TAHOE, 1 7/16" FRT & 1 3/16" RR
- 2245 SWAY BAR SET, 2WD/4WD SUB, 1 7/16" FRT & 1 1/4" RR
- 2249 SWAY BAR SET, 2WD/4WD TAHOE,LWD, 1 7/16" FRT & 1 3/16" RR
- 2250 SWAY BAR SET, 2WD/4WD SUB, LWD, 1 7/16" FRT & 1 1/4" RR

2007 - 2011 GM FULLSIZE SUV

TAHOE, DENALI, ESCALADE, AVALACHE, ETC.

- 2291 SWAY BAR SET, 2WD/4WD TAHOE, 1 1/2" FRT & 1 1/4" RR

2004-UP CHEVY SSR

- 2290 SWAY BARS, 1 5/16" (33.5MM) FRONT & 1 1/8" (28.5MM) REAR

2001 - 2005 GM TRAILBLAZER / ENVOY

- 2272 REAR SWAY BAR 2WD/4WD, 1 1/6"

2003 - 05 HUMMER H2

- 1305 TRAILING ARMS
- 2274 SWAY BARS, STK HT, 1 1/2" FRONT & 1 3/16" REAR
- 2275 SWAY BARS, 3" LIFT, 1 1/2" FRONT & 1 3/16" REAR
- 2276 SWAY BARS, 6" LIFT, 1 1/2" FRONT & 1 3/16" REAR



#2291

FORD TRUCK & SUV

SPORT SWAY BARS & TVS

Control roll and improve towing control of your Ford truck or sport utility vehicle with our Sport Sway Bars or our tuned Total Vehicle System for the F150 Lightning. They dramatically reduce sway and enhance safety without sacrificing ride comfort.



#80304

PART# DESCRIPTION

1997-2003 FORD F-150

- 1939F COIL SPRINGS, 2WD, STD CAB, LIGHTNING, 2" DROP (1.5" LIGHTNING)
- 2241 SWAY BARS, 2WD, STK HT, 1 1/2" FRT (H) & 1" RR (H)
- 2242 SWAY BARS, 2WD, 3" DROP, 1 1/2" FRT (H) & 1" RR (H)
- 2243 SWAY BARS, 2WD, 3" LIFT, 1 1/2" FRT (H) & 1" RR (H)
- 2248 SWAY BARS, 4WD, 3" LIFT, 1 7/16" FRT (H) & 1 1/4" RR (H)
- 2259 SWAY BARS, 4WD, STK HT, 1 7/16" FRT (H) & 1 1/4" RR (H)
- 2412 LEAF SPRINGS, 2WD, STD CAB, LIGHTNING, 3" DROP (2.5" LIGHTNING)
- 70010033 HPS 1000 FRONT SHOCK
- 71010033 HPS 1000 REAR SHOCK
- 80304 TVS KIT, 2WD, STD CAB, LIGHTNING, INCLUDES 1939F, 2242, 2412
- 87385 ALIGNMENT KIT (CAM KIT), 2WD

1997-2002 FORD FULLSIZE SUV (EXPEDITION, LINCOLN NAVIGATOR)

- 2238 SWAY BARS, 2WD, 1 1/2" FRONT BAR (H) & 1 3/16" REAR BAR (H)
- 2239 SWAY BARS, 4WD, 1 1/2" FRONT BAR (H) & 1 3/16" REAR BAR (H)
- 2244 SWAY BARS, 2WD 3" LOWERED, 1 1/2" FRT (H) & 1 3/16" RR (H)

2005-2011 MUSTANG



TRACK PACK TOTAL VEHICLE SYSTEM

Designed for high performance Mustangs headed for autocross and track days, the Hotchkis Sport Suspension Track Pack TVS is a tuned, balanced complete suspension solution for the SN197 Mustang. Born on the track and engineered for razor-sharp handling performance, the Track Pack improves steering response and stability, eliminates under steer and allows for precise driver control. Starting up front, the system includes a strong, lightweight Strut Tower Brace. To improve vehicle feel and offer a more aggressive stance, 1.1" lowered Sport Coil Springs with performance rates are utilized.

To control body roll, lightweight tubular Sway Bars are included; a 1.5" 4 way adjustable front bar and 1" three-way adjustable rear bar allow you to dial-in the way the car responds to throttle steer and driver input. The Hotchkis Chassis Max Sub Frame Connectors and K Member Brace tie the uni-body together, reducing chassis flex. To improve handling control and traction, the rear features an adjustable upper trailing arm with high articulation PTE lined 7/8" heim joint and massive 1.5" CNC machined aluminum body. The lower trailing arms are laser cut, tig welded steel construction for maximum strength to weight performance and include greasable swivel max polyurethane bushings. Lateral movement is controlled by a adjustable panhard rod. All necessary hardware and complete installation instructions are included. This package will give you the ultimate handling Mustang.



2005 - 2011 FORD MUSTANG

PART#	DESCRIPTION
1416	CHASSIS MAX K MEMBER BRACE
2016	CHASSIS MAX STRUT BRACE
4016	CHASSIS MAX SUB FRAME CONNECTORS
15102	ADJUSTABLE PANHARD ROD
1216	ADJUSTABLE UPPER TRAILING ARM
1316	LOWER TRAILING ARMS
1823	REAR SUSPENSION PACKAGE (INCLUDES 1216,1316,15102)
22102	FRONT & REAR SWAY BAR SET F-4 WAY ADJ R-3 WAY ADJ
19391	FRONT & REAR SPRING KIT F-1.1 DROP R-1.6 DROP
80118-1	STAGE 1 KIT INCLUDES 22102 AND 19391
80118-2	TOTAL VEHICLE SYSTEM, (INCLUDES 19391,22102,1416,2016,4016,1823

1979-2004 MUSTANG



with TVS



without TVS



DELTA™ CAMBER/CASTER PLATES

To get true cornering performance and straight line stability, you need more alignment adjustability than is possible with the stock Mustang.

Features:

- Allows up to 3 degrees overall camber adjustment and 5 degrees overall caster movement on 1979-'93 Mustangs.
- With these new alignment options, you can corner hard keeping your tires flat on the ground and power down the straights with more stability.
- Long lasting polyurethane bushings eliminate unwanted strut deflection while maintaining great ride quality.
- Increases strut/shock travel - especially important for lowered cars.
- Our Delta™ Plates are made from high quality TIG welded steel and CNC machined, heat treated 6061 aluminum.
- Powdercoated gloss black, with special strut boots, bump stops, hardware and instructions.

**DOUBLE
ADJUSTABLE
UPPER ARMS**

ADJUSTABLE UPPER TRAILING ARMS

For the serious driver we have developed Adjustable Upper Trailing Arms. Our new trailing arms allow pinion angle adjustment for superior traction and proper u - joint angle at varying ride heights. These trailing arms feature tough, quiet riding, greasable polyurethane bushings, CNC machining and 100% TIG welded construction. They can easily handle the horsepower of even the fastest Mustangs.

SPORT SWAY BARS

Improve the cornering and straight line performance of your Mustang with our sway bars. They control roll in the corners and plant the car on the straights. The hollow front and redesigned rear sway bars are finished in gloss black powdercoat and come complete with polyurethane bushings, stainless steel U-bolts, endlinks and mounting hardware.

REAR SUSPENSION SYSTEM

Our Upper and Lower Trailing Arms work together to positively locate and control the rear axle. Launches are quicker, smoother and more consistent by eliminating wheel hop. Cornering and overall stability are dramatically improved through increased roll stiffness and sway bar effectiveness. The fabricated Trailing Arms are constructed from high quality, TIG welded, .120" wall steel tubing. They feature our exclusive billet CNC machined spring perch and are fitted with special fluted polyurethane bushings. By eliminating unwanted suspension deflection, these components can easily handle the demands of high horsepower, big tires and even racing slicks.

1979-2004 Ford Mustang

PART#	DESCRIPTION
1204*	Upper Trailing Arm
1204AA	Double Adjustable Upper Trailing Arm
1304*	Lower Trailing Arm (1979-'98)
1311*	Lower Trailing Arm (1999-2004)
1701	Upper Trailing Arm Hardware
1705	Lower Trailing Arm Hardware
1805*	Complete Rear Package** (1979-'98)
1805A	Complete Adjustable Rear Package** (1979-'98)
1815*	Complete Rear Package** (1999-2004)
1815A	Complete Adjustable Rear Package** (99-04)
2251	Sport Sway Bar Set (1996-2004)
3001	Delta™ Camber/Caster Plates (1979-'93)
3002	Delta™ Camber/Caster Plates (1994-2004)

*Products available in red or black. (R) after part number denotes red.

**Does not include Coil Springs and Sway Bars



LATE MODEL DODGE APPLICATION GUIDE

2005 - 10 DODGE MAGNUM, CHRYSLER 300C, DODGE CHARGER & 300C SRT8 09-10 CHALLENGER SRT-8, R/T

PART#	DESCRIPTION
19101	SPRING SET,MAGNUM= F & R - 1 1/4" DROP, 300C = F - 1" & R - 3/4" DROP
19104	SPRING SET,CHARGER ONLY, 1 3/8" FRONT DROP& 1 11/16" REAR DROP
19105	SPRING, 300C/CHARGER SRT8 ONLY, 1/8" FRONT DROP & 5/8" REAR DROP
19107	SPRING SET 09 CHALLENGER SRT-8
19108	SPRING SET 09 CHALLENGER R/T
22101	SWAY BARS, 1 3/8" FRONT (H) & 3/4" REAR (H)
22107	SWAY BARS, 1 1/2" FRONT (H) & 3/4" REAR (H)
80101-1	TVS STAGE 1 KIT,MAGNUM & 300C, INCLUDES 19101 & 22101
80104-1	TVS STAGE 1 KIT, CHARGER ONLY, INCLUDES 19104 & 22101
80105-1	TVS STAGE 1 KIT, 300C SRT8 ONLY, INCLUDES 19105 & 22101
80107-1	TVS STAGE 1 KIT, CHALLENGER SRT8 ONLY, INCLUDES 19107 & 22107
80108-1	TVS STAGE 1 KIT, CHALLENGER R/T ONLY, INCLUDES 19108 & 22107

2011-12 DODGE CHARGER RT (STANDARD,ROAD AND TRACK,PLUS,MAX)

PART#	DESCRIPTION
19111	SPRING 1.75 DROP FRONT 1.75 REAR
22111	SWAY BAR KIT F-1.5 (38MM) R-3/4 (19MM)
80111-1	STAGE ONE KIT INCLUDES 19111 & 22111
19111-RS	SPRING 1.75 DROP F1.75 R. INCLUDES REAR BILSTIEN SHOCKS
80111-1RS	TVS KIT INCLUDES 19111,22111 & REAR BILSTIEN SHOCKS

2011-12 DODGE CHALLENGER RT & SRT

PART#	DESCRIPTION
19120	SPRING 2.125 DROP FRONT 1.8 REAR (RT) SPRING 13/16" DROP FRONT 1.25 REAR (SRT)
22107	SWAY BAR KIT F-1.5 (38MM) R-3/4 (19MM)
80120-1	STAGE ONE KIT INCLUDES 19111 & 22111
19120-RS	SPRING 2.125 DROP F1.8 R. INCLUDES REAR BILSTIEN SHOCKS
80120-1RS	TVS KIT INCLUDES 19120,22107 & REAR BILSTIEN SHOCKS





CLASSIC MOPAR APPLICATION GUIDE

1966-1969 MOPAR B-BODY (Charger, Roadrunner, Super Bee, GTX)

PART#	DESCRIPTION
1110	TUBULAR A-ARMS
1760	HOOD PINS
1761	BATTERY HOLD-DOWN
3003	THRUST ANGLE SHIMS
4010	SUB FRAME CONNECTORS
14366	ADJUSTABLE STRUT RODS
16366	STEERING TIE ROD KIT
17367	HEAVY DUTY SHACKLE KIT
19367	TORSION BARS 1.03 41"
21366	LOWER A-ARM BUSHINGS
23366	LOWER CONTROL ARM SWAY BAR BRACKET
24366	REAR LEAF SPRING KIT
2255	SWAY BAR SET 1 3/8" (F), 1" (R)
2255F	FRONT SWAY BAR SET 1 3/8 (F)
2255R	REAR SWAY BAR SET, 1"
80110	TVS KIT INCLUDES 1110,14366,16366,2255,24366,4010

1970-1974 CHRYSLER E-BODY (Challenger, Cuda)

PART#	DESCRIPTION
1110	TUBULAR A-ARMS
1760	HOOD PINS
1761	BATTERYHOLD DOWN
3003	THRUST ANGLE SHIMS
14366	ADJUSTABLE STRUT RODS
16366	STEERING TIE ROD KIT
17367	HEAVY DUTY SHACKLE KIT
19367	TORSION BARS 1.03 41"
21366	LOWER A-ARM BUSHINGS
23367	LOWER CONTROL ARM SWAY BAR BRACKET
24367	REAR LEAF SPRING KIT
2254	SWAY BAR SET 1 3/4" (F), 3/4 (R)
2254F	FRONT SWAY BAR SET 1 1/4 (F)
2254R	REAR SWAY BAR SET, 1"
80111	CHALLENGER TVS KIT INCLUDES 1110,14366,16366,2254,24367,4011L
80112	CUDA TVS KIT INCLUDES 1110,14366,2254,24367,4011S
4011L	SUB FRAME CONNECTORS (CHALLENGER)
4011S	SUB FRAME CONNECTORS (CUDA)

1967-1972 CHRYSLER A-BODY

67-72 DODGE DART, 71-72 DODGE DEMON, 67-69 PLYMOUTH BARRACUDA, 70-72 DODGE PLYMOUTH DUSTER, 71-72 PLYMOUTH SCAMP 67-72 PLYMOUTH VALIANT

PART#	DESCRIPTION
1112	TUBULAR A-ARMS
1760	HOOD PINS
4014	SUBFRAME CONECTORS (108" WHEELBASE)
4015	SUBFRAME CONECTORS (111" WHEELBASE)
14385	ADJUSTABLE STRUT RODS
16385	STEERING TIE ROD KIT
21366	LOWER A-ARM BUSHINGS
22385	SWAY BAR SET 1 1/2" (F), 1 (R)
22385F	FRONT SWAY BAR SET 1 1/2 (F)
22385R	REAR SWAY BAR SET, 1"
24385	REAR LEAF SPRING KIT
80113	TVS KIT

1973-1976 CHRYSLER A-BODY

73-76 DODGE DART, 73-76 DODGE DART SPORT, 73-76 DODGE PLYMOUTH DUSTER, 73-76 PLYMOUTH SCAMP 73-76 PLYMOUTH VALIANT

PART#	DESCRIPTION
1113	TUBULAR A-ARMS
1760	HOOD PINS
4015	SUBFRAME CONECTORS (111" WHEELBASE)
14385	ADJUSTABLE STRUT RODS
16835	STEERING TIE ROD KIT
21366	LOWER A-ARM BUSHINGS
22386	SWAY BAR SET 1 1/2" (F), 1 (R)
22386F	FRONT SWAY BAR SET 1 1/2 (F)
22386R	REAR SWAY BAR SET, 1"
24385	REAR LEAF SPRING KIT
80114	TVS KIT

MOPAR TOTAL VEHICLE SYSTEM

1967-76 A BODY, DART, DEMON, BARRACUDA,
DUSTER, SCAMP, VALIANT



*Application varies per year and car type. Please see our website or application guide for exact applications.



#80113, 1967 - 1972

UPPER A-ARMS

- Dramatically improves traction and steering response
- Lightweight tubular a-arms improve camber curve
- Reduced bump steer
- Bright nickel colored powder coat finish, bolt-on installation

STEERING KIT

- Corrects bump steer in conjunction with upper a-arm
- Improves Stability
- Bright nickel colored powder coat finish, bolt-on installation

STRUT RODS

- Rigid 5/8" high articulation rod ends
- Positively positions lower arm for improved responsiveness and driver feedback
- Bright nickel colored powder coat finish, bolt-on installation

SWAY BARS

- Substantial handling improvement with bolt-on installation
- Adjustable for balanced handling and excellent control
- Includes complete hardware and detailed instructions

LEAF SPRINGS

- Fabricated leaf spring mounts move spring pick up points to eliminate rear steer
- Lowers stance 1" for improved stability and great looks
- Increased spring rate for comfortable sport ride



#4014,15

SUB FRAME CONNECTORS

- Dramatically reduces chassis flex during hard cornering and acceleration
- Rigidly connects the front sub frame to rear chassis frame rail
- No cutting or modifying floor pan, unique tucked-in design



MOPAR TOTAL VEHICLE SYSTEM

70-74 E BODY CUDA, CHALLENGER
66-70 B BODY, CHARGER, CORONET, SUPER BEE,
SATELITE, ROAD RUNNER, GTX



UPPER A-ARMS

- Dramatically improves traction and steering response
- Geometry corrected with improved camber curve
- Pick up point relocation brackets correct excessive caster gain and reduce bump steer
- Bright nickel colored powder coat finish, bolt-on installation

STRUT RODS

- Rigid 5/8" high articulation rod ends
- Positively positions lower arm for improved responsiveness
- Bright nickel colored powder coat finish, bolt-on installation

SUB FRAME CONNECTORS

- Dramatically reduces chassis flex during hard cornering and acceleration
- Rigidly connects the front sub frame to rear chassis frame rail
- No need to cut or modify floor pan
- Tucked-in design for excellent ground clearance

SWAY BARS

- Adjustable for balanced handling and excellent control
- Bolt-on installation
- Includes complete hardware and detailed instructions

STEERING KIT

- Corrects bump steer in conjunction with upper a-arm
- Improves Stability
- Bright nickel colored powder coat finish, bolt-on installation

LEAF SPRINGS

- Fabricated leaf spring mounts move spring pick up points to eliminate rear steer
- Lowers stance 1" for improved stability and great looks
- Increased spring rate for comfortable sport ride
- Bolt-on installation

SPORT COMPACT



#22441 370Z

ACURA

2002-06 ACURA RSX

PART#	DESCRIPTION
22405	COMP SWAY BARS, 1" (25MM) FRT (H) & 1 1/16" (27MM) RR (H)
25405	END LINK SET
22405R	COMPETITION REAR SWAY BAR, 1 1/16" (27MM) REAR BAR (H)
25405F	FRONT ENDLINKS
25405R	REAR ENDLINKS

DODGE

2003-05 DODGE NEON SRT4

PART#	DESCRIPTION
22419	SPORT SWAY BARS, 1 1/8" (29MM) FRONT (H) & 15/16" (24MM) REAR

MAZDA

2004-2007 MAZDA SPEED 3 & 2007 MAZDASPEED 3

PART#	DESCRIPTION
22436	SWAY BAR 1 1/8 FRONT & 1 1/4" REAR

2006-2007 MX-5, MIATA

PART#	DESCRIPTION
22435	SWAY BAR 1 1/16 FRONT & 13/16" REAR

2004-2007 RX-8

PART#	DESCRIPTION
22437	SWAY BAR 1 5/16" FRONT & 13/16" REAR

MINI

2003-07 MITSUBISHI EVO 8&9

PART#	DESCRIPTION
22423	REAR SPORT SWAY BAR, 15/16" (24MM) REAR (H)

2008-11 MITSUBISHI EVO 10

PART#	DESCRIPTION
22440	SWAY BAR KIT F-1 1/4 (32MM) R- 1 1/4(32MM)
22440F	FRONT SWAY BAR 1 1/4 (32MM) 2WAY ADJ 50.70%
22440R	REAR SWAY BAR 1 1/4 (32MM) 3WAY ADJ 155,195,245%
25440R	REAR ENDLINKS

NISSAN, INFINITI

2003-07 NISSAN 350Z, INFINITI G35

PART#	DESCRIPTION
19413	COIL SPRING SET, 9/16" (15MM) FRT & 3/4" (19MM) REAR (NOT G35)
22413	SPORT SWAY BARS, 1 3/8" (35MM) FRT (H) & 15/16" (24MM) RR (H)
22413F	FRONT SWAY BAR 35MM
80413-1	TVS STAGE 1 KIT, INCLUDES 19413 & 22413 (NOT G35)

2009-11 370Z, 2007-11 INFINITI G35 SEDAN 4DR, 2008-11, G37/S COUPE

PART#	DESCRIPTION
22441	SWAY BAR KIT F-1 3/8 (35MM)R-1.125 (28MM) F-1 HOLE R-3 HOLE

2008-11 INFINITI G37X AWD COUPE SEDAN

PART#	DESCRIPTION
22443	SWAY BAR KIT F-1 3/8 (35MM)R-1.063 (27MM) F-2 HOLE R-3 HOLE



#22407 WRX

SUBARU

2001-2003 SUBARU WRX

PART#	DESCRIPTION
22406	SPORT SWAY BARS, 1" (25MM) FRONT & REAR BARS (H) (SEDAN)
22407	COMP SWAY BARS W/ENLINKS, 1" (25MM) FRT & RR BARS (SEDAN)
22427	SPORT SWAY BARS, 1" (25MM) FRONT & REAR BARS (H) (WAGON)
22428	COMP SWAY BARS W/ENLINKS, 1" (25MM) FRT & RR BARS(WAGON)
25406	ENLINK SET (WAGON)
25407	ENLINK SET (SEDAN)
22407R	COMPETITION REAR SWAY BAR WITH ENDLINKS, 1" (25MM) (H)
25406F	FRONT ENDLINKS (WAGON)
25406R	REAR ENDLINKS (SEDAN & WAGON)
25407F	FRONT ENDLINKS (SEDAN)

2004-07 SUBARU WRX

PART#	DESCRIPTION
22406	SPORT SWAY BARS, 1" (25MM) FRONT & REAR BARS (H)
22407	COMP SWAY BARS W/ENLINKS, 1"(25MM) FRT & RR BARS(SEDAN)
22427	SPORT SWAY BARS, 1" (25MM) FRONT & REAR BARS (H) (WAGON)
22428	COMP SWAY BARS W/ENLINKS, 1" (25MM) FRT & RR BARS(WAGON)
25406	ENLINK SET (WAGON)
25407	ENLINK SET (SEDAN ONLY)
22407R	COMPETITION REAR SWAY BAR WITH ENDLINKS, 1" (25MM) (H)
25406F	FRONT ENDLINKS (WAGON)
25406R	REAR ENDLINKS (SEDAN & WAGON)
25407F	FRONT ENDLINKS (SEDAN)

2004-07 SUBARU WRX STI

PART#	DESCRIPTION
22417	SPORT SWAY BARS, 1" (25MM) FRONT & REAR BARS (H)
22418	COMP SWAY BARS, 1" (25MM) FRONT & REAR BARS (H)
25405	ENLINK SET
22418R	COMPETITION REAR SWAY BAR, 1" (25MM) (H)
25405F	FRONT ENDLINKS
25405R	REAR ENDLINKS

TOYOTA, LEXUS, SCION

2001-05 LEXUS IS300

PART#	DESCRIPTION
19410	SPORT COIL SPRING SET, 1 1/2" (38MM) FRONT & 1" (25MM) REAR
22410	SPORT SWAY BARS, 1 1/4" (32MM) FRT (H) & 3/4" (19MM) RR (H)
80410-1	TVS STAGE 1 KIT, INCLUDES 19410 & 22410

2006-2008 LEXUS IS250/350

PART#	DESCRIPTION
19438	COIL SPRINGS 1 5/8 FRONT & 7/8 REAR DROP
22438	SWAY BARS 1 1/4" FRONT & 3/4" REAR
80438-1	STAGE 1: INCLUDES 19438 & 22438

2004-07 SCION XA & XB

PART#	DESCRIPTION
22412	SPORT SWAY BARS, 1 1/8" (29MM) FRT & 1/2" (13MM) RR (S)
22414	FRONT - 1 1/8" (29MM) (H) REAR - 15/16" (24MM) (H)
22414R	REAR - 15/16" (24MM) (H) ADD-ON BAR 250 LBS/IN

2008 - 2009 SCION XA & XB

PART#	DESCRIPTION
22429	FRONT - 1 1/4" (32MM) % STIFFER THAN STOCK, REAR -1" (25MM)
22429R	REAR -1" (25MM) (H)

2005 - 10 SCION TC

PART#	DESCRIPTION
12425	REAR CAMBER LINKS
22425	SPORT SWAY BARS, 15/16" (24MM) FRONT & 1 1/16" (27MM) REAR

2000-05 TOYOTA CELICA

PART#	DESCRIPTION
12700	REAR CAMBER LINKS
19400	SPORT COIL SPRING SET, 1 3/8" (35MM) FRT & 1 7/8" (48MM) REAR
22400	SPORT SWAY BARS, 1" (25MM) FRONT & REAR BAR (H)
22401	COMPETITION SWAY BARS, 1" (25MM) FRONT & REAR BAR (H)
22401R	COMPETITION REAR SWAY BAR, 1" (25MM) REAR BAR (H)
80400-1	TVS STAGE 1 KIT, INCLUDES 19400 & 22400

1998-2002 TOYOTA COROLLA

PART#	DESCRIPTION
22421	SPORT SWAY BARS, 1 1/8" (29MM) FRONT (H) & 3/4" (19MM) REAR



#22825

AUDI

1996-2001 AUDI A4 QUATTRO & S4

PART# DESCRIPTION
22801 SWAY BARS, 1 3/8" (35MM) FRT & 7/8" (22MM) RR, B5 PLATFORM

2000-2004 AUDI A6 QUATTRO & S6

PART# DESCRIPTION
22822 SWAY BARS, 1 3/8" (35MM) FRT BAR (H) & 7/8" (22MM) RR BAR (H)

2002-08 AUDI A4 B6 & B7 PLATFORM

PART# DESCRIPTION
22823 SWAY BARS, 1 3/8" (35MM) FRT (H) & 7/8" (22MM) RR (H), B6 & B7

2009-2011 AUDI A4/S4 B8 PLATFORM

PART# DESCRIPTION
22836 SWAY BAR SET F-1 1/4(32MM) 2 HOLES R-1 (25.5MM)

2004-08 AUDI S4

PART# DESCRIPTION
22829 SWAY BARS, 1 3/8" (35MM) FRT (H) & 15/16" (24MM) RR (H), B6 & B7

2001-2004 AUDI ALLROAD

PART# DESCRIPTION
22815 SWAY BARS, 1 3/8" (35MM) FRT (H) & 7/8" (22MM) RR (H)

2003-2004 AUDI RS6

PART# DESCRIPTION
22827 SWAY BARS, 1 3/8" (35MM) FRT (H) & 15/16" (24MM) RR (H)

2000-08 AUDI TT

PART# DESCRIPTION
22806 SWAY BARS

2006-2007 AUDI RS4 B7 PLATFORM

PART# DESCRIPTION
22832 SWAY BARS 1 3/8" FRONT (35MM) & 15/16" REAR (24MM)

2006-2010 AUDI A3 MKVI PLATFORM

PART# DESCRIPTION
22833 SWAY BAR SET F-1 1/16(27MM) R-1 1/16 (27MM)
22833F FRONT SWAY BAR 1 1/16 (27MM) 3 HOLES 45%,70%,105%
22833R REAR SWAY BAR 1 1/16 (27MM) 3 HOLES 90%,135%,200%

BWM

1999-05 BMW E46 3 SERIES

PART# DESCRIPTION
19824 SPORT COIL SPRING SET, 3/4" (19MM) FRONT & 3/8" (9.5MM) REAR
22825 SWAY BARS, 1 3/16" (30MM) FRONT (H) & 1" (25MM) REAR (H)
80825-1 TVS STAGE 1 KIT, INCLUDES 19824 & 22825

2007-2009 BMW E90/E92 330/335i

PART# DESCRIPTION
12834 REAR CAMBER LINKS
22834 SWAY BAR SET W/ ENDLINKS
22834F FRONT SWAY BAR 1 1/4 (32MM) W/ ENDLINKS
22834R REAR SWAY BAR 7/8 (16MM) W/ ENDLINKS

2007-2009 BMW E82 135 (1 SERIES)

PART# DESCRIPTION
22834F FRONT SWAY 1 1/4 (32MM)

1999-05 BMW E46 M3

PART# DESCRIPTION
22826 SWAY BARS, 1 3/16" (30MM) FRONT (H) & 1" (25MM) REAR (H)
25826 REAR END LINKS
22826F FRONT SWAY BAR 1 3/16(30MM)
22826R REAR SWAY BAR 1 (25MM)



MINI

2002-06 MINI COOPER & COOPER S R53

PART# DESCRIPTION
13800 REAR CAMBER LINKS, 2 LOWER LINKS
13810 REAR CAMBER LINKS, 2 UPPER & 2 LOWER LINKS
19800 SPORT COIL SPRING SET, 1" (25MM) FRONT & 1" (25MM) REAR
22800 SPORT SWAY BARS, 1 1/16" (27MM) FRT (H) & 3/4" (19MM) RR (H)
22800F FRONT SPORT SWAY BAR, 1 1/16" (27MM) (H)
22800R REAR SPORT SWAY BAR, 3/4" (19MM) (H)
22810 COMP SWAY BARS, 1 1/16" (27MM) FRT (H) & 1" (25MM) RR (H)
22810R COMP REAR SWAY BAR, 1" (25MM) x .120 WALL REAR BAR (H)
22811R RACE REAR SWAY BAR, 1" (25MM) x .250 WALL REAR BAR (H)
30830 FRONT CAMBER PLATES STOCK DIAMETER (0 TO -2)
30832 FRONT CAMBER PLATES 2.25 DIAMETER (0 TO -3.6)
30835 FRONT CAMBER PLATES 2.5 DIAMETER (0 TO -3.6)
30830-225 SPRING SEAT UPGRADE FOR USE WITH 2.25 DIAMETER COILS
30830-250 SPRING SEAT UPGRADE FOR USE WITH 2.5 DIAMETER COILS
80800-1 TVS STAGE 1 KIT, INCLUDES 19800 & 22800

2007 - MINI COOPER & COOPER S R56

PART# DESCRIPTION
13800 REAR CAMBER LINKS (2 LOWER)
13810 REAR CAMBER LINKS (2 LOWER & 2 UPPER)
22800R REAR - 3/4" (19MM) (H) 40%/65%/100% STIFFER THAN STOCK
22810R REAR - 1" (25MM) (H) 195%/250%/330% STIFFER THAN STOCK
22811R REAR - 1" (25MM) (H) 315%/390%/500% STIFFER THAN STOCK

VOLKSWAGON

1999-2004 VOLKSWAGON GOLF, GTI, JETTA (MARK IV)

PART# DESCRIPTION
22813 SPORT SWAY BARS, 1 1/16" (27MM) FRT, 1 3/16" (30MM) REAR,

2005-2011 VOLKSWAGON GLI (MARK V)

PART# DESCRIPTION
22833F FRONT SWAY BAR 1 1/16" (27MM) 3 WAY ADJ.
22833R REAR SWAY BAR 1 1/16" (27MM) 3 WAY ADJ.
22833 SWAY BARS 1 1/16"(27MM) FRONT & 1 1/16"(27MM) REAR

HEAVY DUTY BILLET SWAY BAR BUSHING BRACKETS

FEATURES:

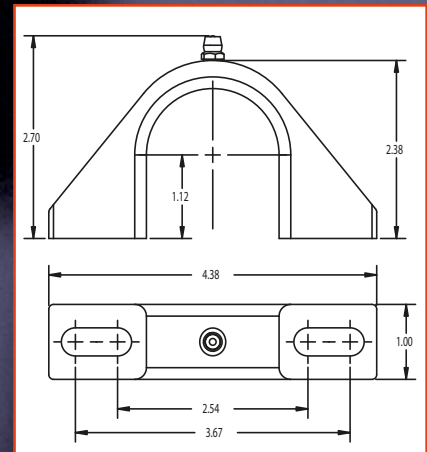
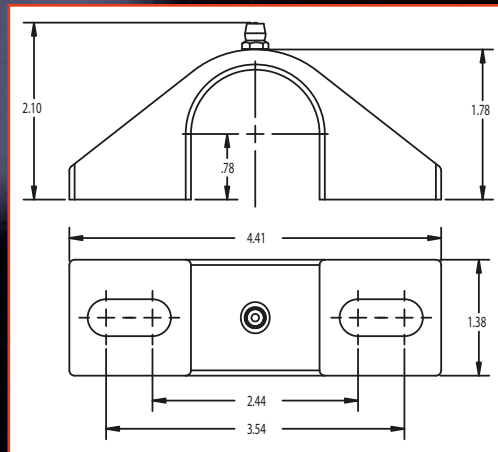
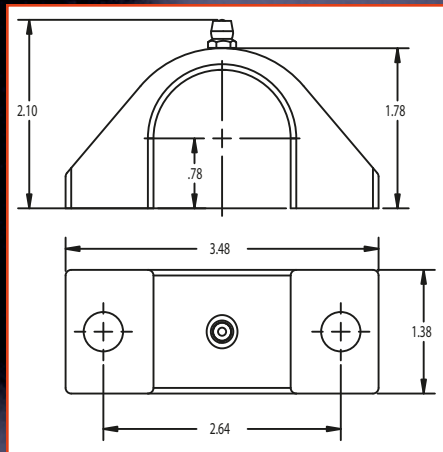
- CNC Machined 7075 Aluminum
- Hard Anodized
- Grease Fittings
- Polyurethane Bushings
- Hardware & Washers Included (Style C)
- Includes Our Special Grease
- Universal Application

Common Hotchkis Applications:

- 2201F & 2202F Use 2391375
- 2207F use 23191125



#23391375



BAR DIAMETER

BAR DIAMETER	STYLE A	STYLE B	STYLE C
5/8"	23190625	23290625	-
3/4"	23190750	23290750	-
13/16"	23190813	23290813	-
7/8"	23190875	23290875	-
15/16"	23190938	23290938	-
1"	23191000	23291000	-
1-1/16"	23191063	23291063	23391063
1-1/8"	23191125	23291125	23391125
1-3/16"	23191188	23291188	23391188
1-1/4"	23191250	23291250	23391250
1-5/16"	23191313	23291313	-
1-3/8"	-	-	23391375

ACCESSORIES

UNIVERSAL HOOD PINS



#1760

FEATURES:

- CNC machined aluminum
- Hard anodized finish
- Aircraft spec quick release stainless steel pins and hardware
- Universal design fits practically all vehicles
- Laser etched Hotchkis logo



MADE IN USA

1967-69, 1970-81 CAMARO FENDER SUPPORT BRACES



1967-69 #2015
1970-81 #2018

FEATURES & BENEFITS:

- Lightweight, strong, elliptical billet aluminum
- Polished finish
- Laser cut steel brackets
- Increases rigidity
- Enhances appearance
- Bolt-on installation
- Complete with special hardware

HOTCHKIS GEAR



#32101

GM DIFFERENTIAL BUSHING REMOVAL TOOL

The Hotchkis GM upper trailing arm bushing install and removal tool allows for easy removal and installation of new bushings in GM 10 & 12 bolt rear ends commonly found in GM A-Body vehicles. Our tool makes a great addition to any professional or backyard mechanics tool box.



#3101

BUSHING GREASE



PRO ASSORTMENT HARDWARE/ELECTRICAL KIT



Visit www.hotchkis.net for more styles.

THE HOTCHKIS TEAM

Dan "the man"



KWS taking John Hotchkis for a ride.



KWS's Hotchkis equipped Duster.



Carl @ Speed



Mike H.



Sam

Trish & Rob



Deanna



Mary "at the office"

Get the free mobile app at <http://gettag.mobi>

HOTCHKIS
PERFORMANCE
 SPORT SUSPENSION

8633 Sorensen Avenue • Santa Fe Springs, CA 90670
 Toll Free (800) 751-8918 • www.hotchkis.net

Hotchkis Performance™, Horsepower For Your Suspension™, Hotchkis Sport Suspension™, and TVS™, are all trademarks of Hotchkis Performance, LLC. Prices, specifications and terms are subject to change without notice. ©2011 Hotchkis Performance, LLC.